

Brickworks

Date: 2023

Location: Leetsdale, PA

Advantage: Reduced Curling,
Eliminate Joints



Bazella Group
Whitehall, PA
www.bazellagroup.com



Technical Specifications

Fiber Reinforcement: FORTA-FERRO[®] 2-1/4"

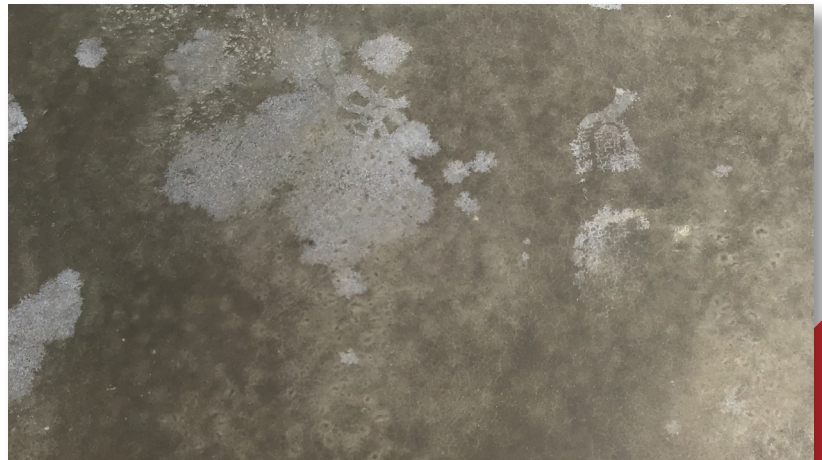
Application: Slab-on-Ground

Dosage: 3.0 lb/cu yd

Joint Spacing: Joint-Free (275' x 75')

Delivery Method: Tailgated

Finishing Method: Broomed/
Hard-Steel Troweled



This newly constructed building will be home to basketball and volleyball courts. **FORTA-FERRO** macro synthetic fiber was used in conjunction with traditional steel reinforcement to **eliminate joints and reduce curling**. The use of fibers will ensure that these courts will remain **Stronger Lasting™** for many years to come.



World-class design services, on-site support. Contact us to learn more.