

Large Warehouse Facility

Date: 2021

Location: Detroit, MI

Advantage: Durability



Technical Specifications

Fiber Reinforcement: FORTA-FERRO[®] 2-1/4"

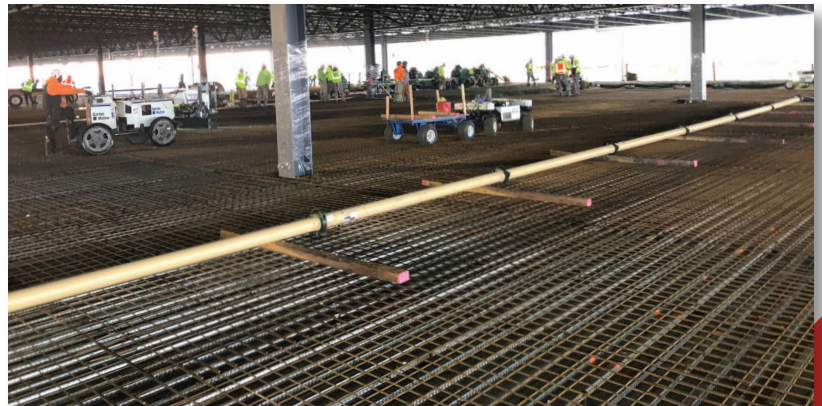
Application: Slab-on-Metal Deck

Dosage: 7.5 lb/cu yd

Total Project Size: 1 million sq ft

Delivery Method: Pumped

Finishing Method: Troweled



This newly constructed multi-story commercial building utilized **FORTA-FERRO** macro-synthetic fibers at a 7.5 lb/cu yd dosage. The project consisted of multiple decks and used fiber reinforcement to complement traditional steel for added **durability**. Specified fibers were pumped into place, and the project was completed with a troweled finish. Owners relied on **FORTA's** history of offering **the industry's best mixing and finishing reinforcement fiber**.

World-class design services, on-site support. Contact us to learn more.