

Large Sortation Facility

Date: 2021

Location: Union City, GA

Advantage: Durability



Technical Specifications

Fiber Reinforcement: FORTA-FERRO[®] 2-1/4"

Application: Slab-on-Metal Deck

Dosage: 7.5 lb/cu yd

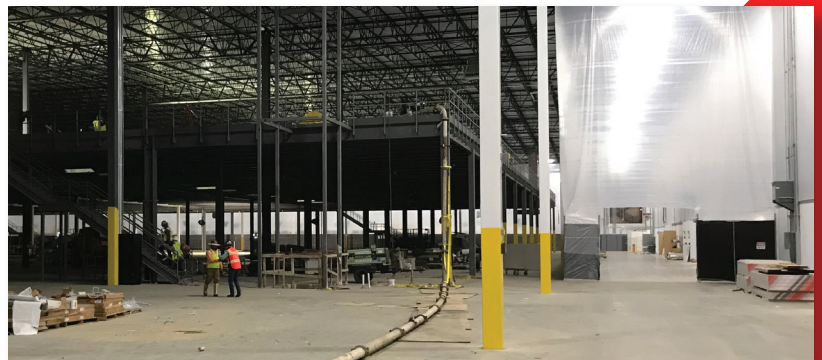
Total Project Size: 225,000 sq. ft.

Delivery Method: Pumped

Finishing Method: Troweled



FORTA-FERRO macro synthetic fibers were used in the construction of this large sortation facility due to its **increased durability and ductility**. The high-volume robotic traffic at this facility requires **increased surface durability** and **crack-controlling** characteristics of **FORTA** reinforcement fibers.



World-class design services, on-site support. Contact us to learn more.